



Rookwood Way, London, E3

BUTLER & STAG



Guide Price - £525,000 to £550,000
Perched atop a contemporary development in the vibrant neighborhood of Hackney Wick, London, awaits a stunning one-bedroom penthouse offering unparalleled luxury and breathtaking views. Boasting a south-facing private terrace with panoramic vistas of Canary Wharf and the city skyline, this residence epitomizes sophisticated urban living at its finest. Nestled in close proximity to the scenic canal, residents can enjoy a perfect balance of tranquility and urban excitement.



Leasehold

- Stunning One Apartment
- Beautiful View Of Canary Wharf
- Trendy Hackney Location
- Close to Canal
- South Facing Private Terrace Wharf
- Close to Amenities & Transport Links

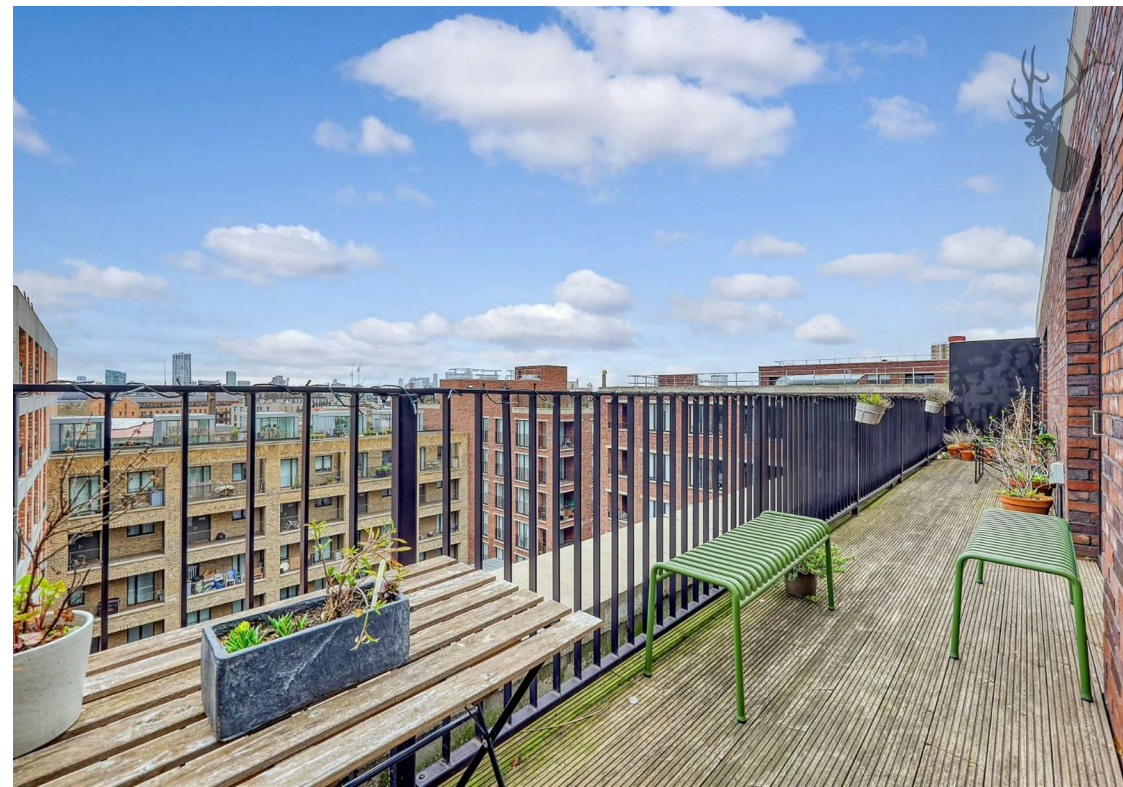
This modern penthouse exudes elegance and style, with sleek contemporary design elements seamlessly integrated throughout. Upon entering, residents are greeted by an expansive open-plan living space flooded with natural light, courtesy of floor-to-ceiling windows that frame captivating views of the surrounding skyline. The interior features high-quality finishes, including hardwood flooring, designer fixtures, and bespoke cabinetry, creating an atmosphere of refined luxury.

The centerpiece of this exceptional residence is undoubtedly the south-facing private terrace, offering an idyllic retreat to relax and entertain while soaking in the mesmerizing vistas of Canary Wharf and beyond. Whether enjoying a morning coffee bathed in sunlight or hosting soirées under the stars, the terrace provides an unparalleled backdrop for every occasion.

Situated in the dynamic neighborhood of Hackney Wick, this penthouse offers proximity to an array of cultural, culinary, and recreational attractions. Residents can explore the vibrant street art scene, indulge in artisanal dining experiences, or unwind with leisurely strolls along the scenic canal towpath. Excellent transport links, including Hackney Wick Overground station, provide easy access to central London and beyond, ensuring connectivity to the city's diverse offerings.

In conclusion, this modern one-bedroom penthouse in Hackney Wick represents the epitome of urban luxury living. With its stunning design, south-facing private terrace, and unparalleled views of Canary Wharf, this residence offers a lifestyle of sophistication and indulgence. Whether seeking a tranquil oasis or a vibrant urban retreat, residents can enjoy the best of both worlds in this exceptional penthouse in the heart of Hackney Wick.



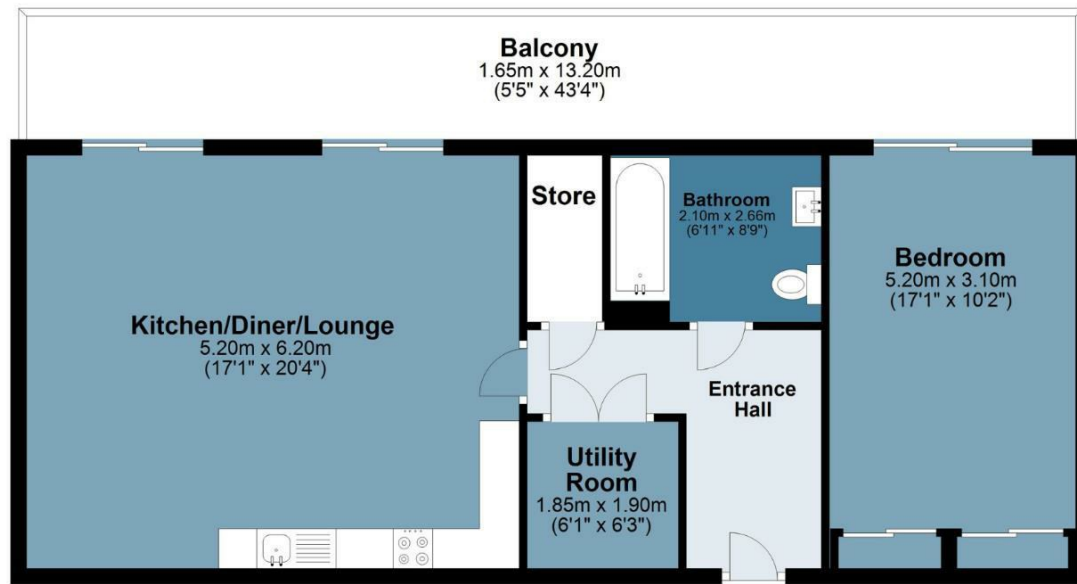


Halo Court

BUTLER & STAG

Approx. Gross Internal Area 68.7 sq. metres (739 sq. feet)

Sixth Floor
Approx. 68.7 sq. metres (739.0 sq. feet)



Measurements are approximate and for illustration purposes only. While we do not doubt the accuracy and completeness, we advise you conduct a careful independent assessment of the property to determine monetary value
© @modephoto.uk www.modephoto.co.uk

BUTLER & STAG

☎ 020 8102 1236

🏠 508 Roman Road, Bow, London, E3 5LU

✉ bow@butlerandstag.com

IMPORTANT NOTICE - These particulars have been prepared in good faith and they are not intended to constitute part of an offer or contract. We have not performed a structural survey on this property and the services, appliances and specific fittings have not been tested. All photographs, measurements, floor plans and distances referred to are given as a guide and should not be relied upon.

www.butlerandstag.uk